

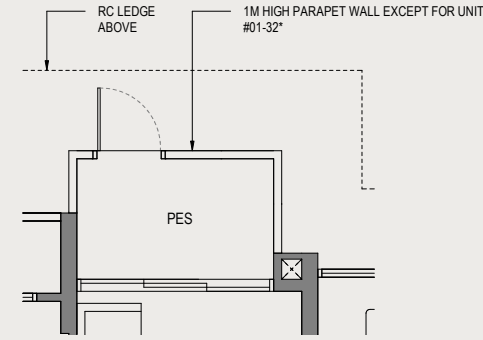
# 2 Bedroom



## TYPE B1-G

49 SQ M / 527 SQ FT  
INCLUSIVE OF 4 SQM PES

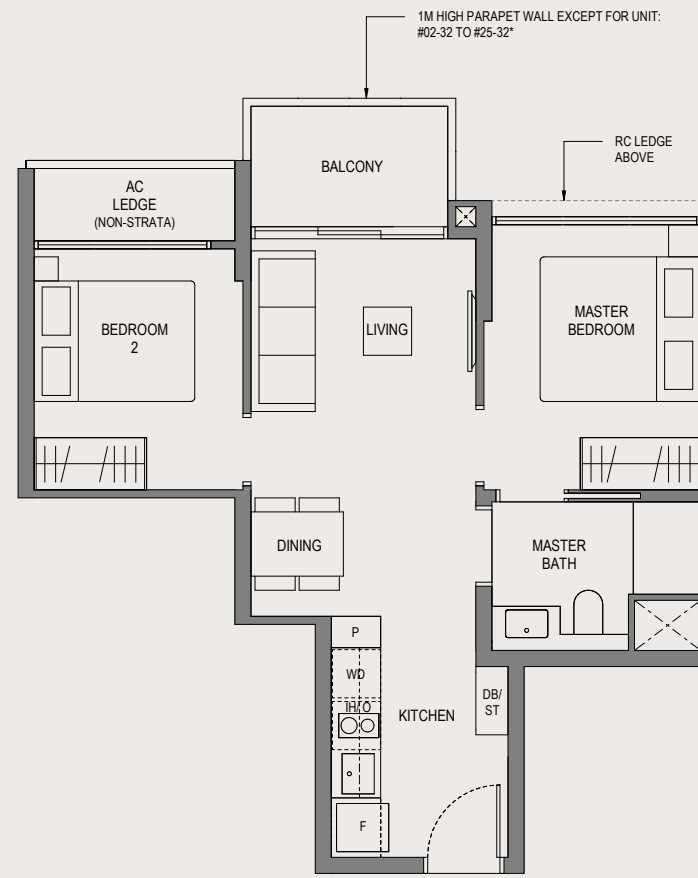
BLOCK	UNIT
813	#01-09 #01-16*
815	#01-17 #01-24*
817	#01-32*



## TYPE B1

49 SQ M / 527 SQ FT  
INCLUSIVE OF 4 SQM BALCONY

BLOCK	UNIT
813	#02-09 to #08-09 #11-09 to #15-09 #18-09 to #25-09 #02-16* to #25-16*
815	#02-17 to #12-17 #15-17 to #19-17 #22-17 to #25-17 #02-24* to #25-24*
817	#02-32* to #25-32*

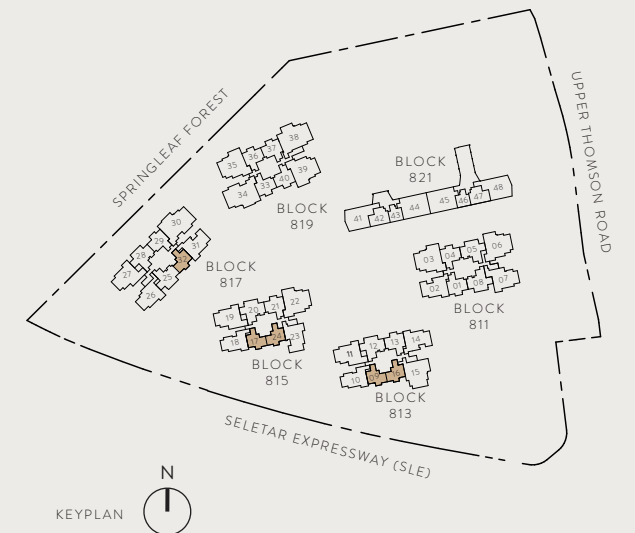
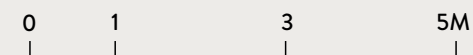


\*MIRROR IMAGE

### LEGEND

- F - Fridge
- P - Pantry
- O - Oven
- IH - Induction Hob
- WD - Washer Dryer
- DB - Distribution Board
- ST - Store

ALL PLANS ARE SUBJECT TO AMENDMENTS AS MAY BE APPROVED BY THE RELEVANT AUTHORITIES.  
FLOOR AREAS ARE APPROXIMATE MEASUREMENTS AND ARE SUBJECT TO FINAL SURVEY.  
BUILDING PLAN CX ES NO.: ES20250314-50002-CG01  
PROJECT REFERENCE NO.: A1709-A0050-2024  
DATED: 18 JULY 2025



# 2 Bedroom

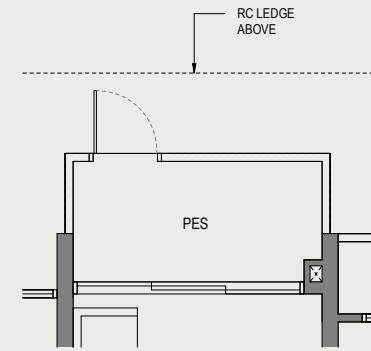


## TYPE B2-G

60 SQ M / 646 SQ FT  
INCLUSIVE OF 5 SQM PES

**BLOCK**     **UNIT**

- 811     #01-01
- 813     #01-13
- 815     #01-21
- 817     #01-29
- 819     #01-33  
#01-36\*  
#01-37  
#01-40\*



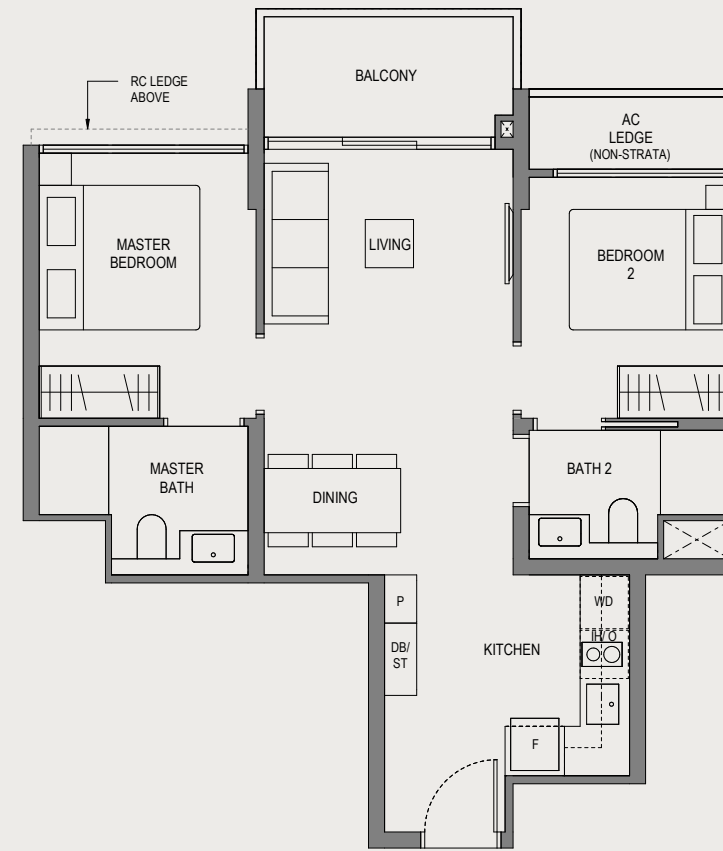
APPLICABLE TO TYPE B2-G

## TYPE B2

60 SQ M / 646 SQ FT  
INCLUSIVE OF 5 SQM BALCONY

**BLOCK**     **UNIT**

- 811     #02-01 to #25-01  
#03-04\* to #25-04\*
- 813     #02-13 to #25-13
- 815     #02-21 to #25-21
- 817     #02-29 to #25-29
- 819     #02-33 to #25-33  
#02-36\* to #25-36\*  
#02-37 to #08-37  
#11-37 to #15-37  
#18-37 to #25-37  
#02-40\* to #08-40\*  
#11-37 to #15-37  
#18-37 to #25-37  
#02-40\* to #08-40\*  
#11-40\* to #15-40\*  
#18-40\* to #25-40\*

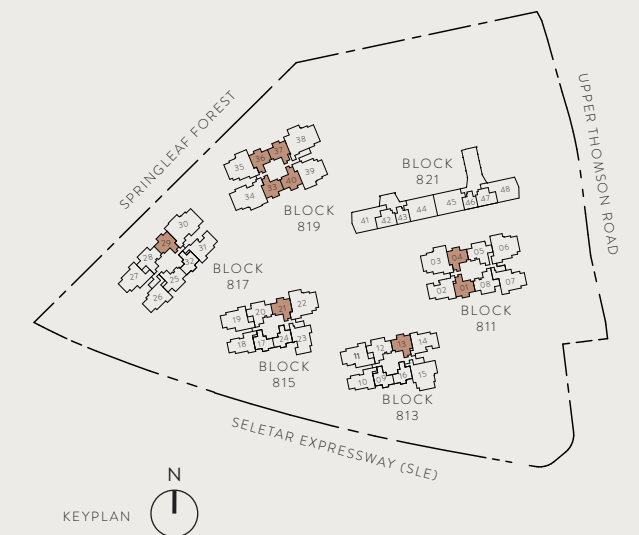
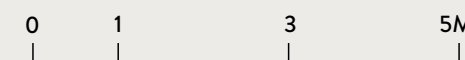


\*MIRROR IMAGE

### LEGEND

- F - Fridge
- P - Pantry
- O - Oven
- IH - Induction Hob
- WD - Washer Dryer
- DB - Distribution Board
- ST - Store

ALL PLANS ARE SUBJECT TO AMENDMENTS AS MAY BE APPROVED BY THE RELEVANT AUTHORITIES.  
FLOOR AREAS ARE APPROXIMATE MEASUREMENTS AND ARE SUBJECT TO FINAL SURVEY.  
BUILDING PLAN CX ES NO.: ES20250314-50002-CG01  
PROJECT REFERENCE NO.: A1709-A0050-2024  
DATED: 18 JULY 2025



# 3 Bedroom

## TYPE C1-G

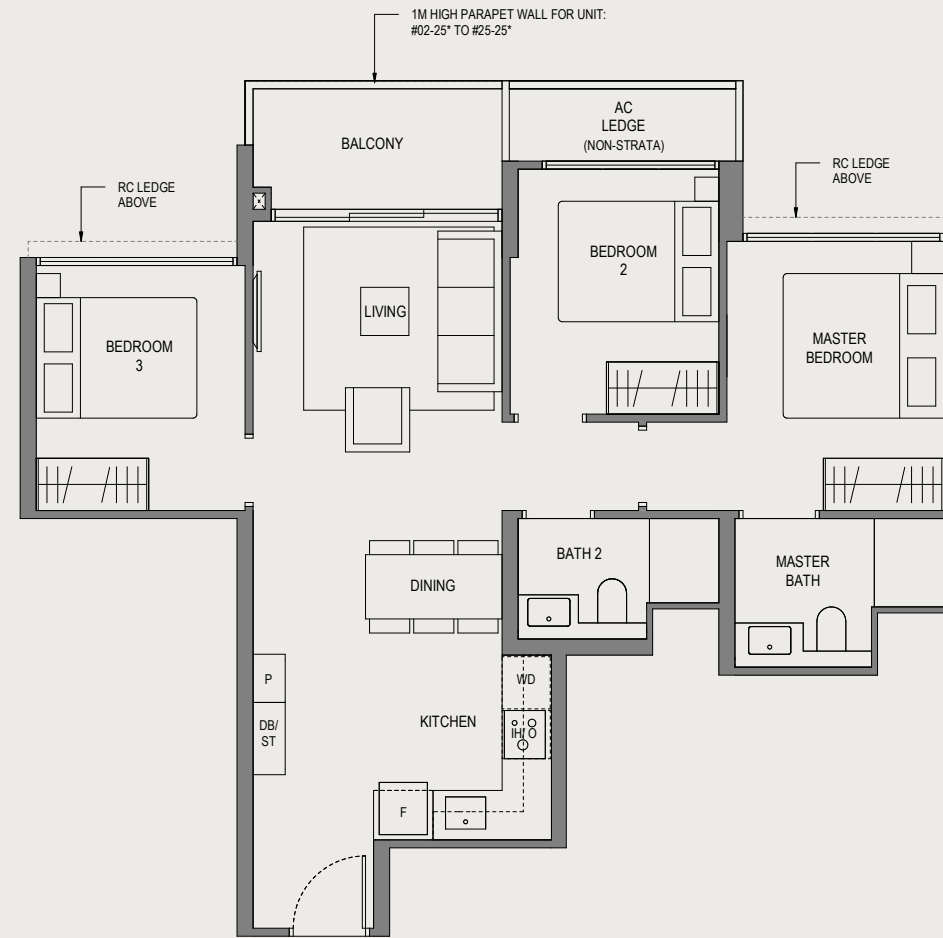
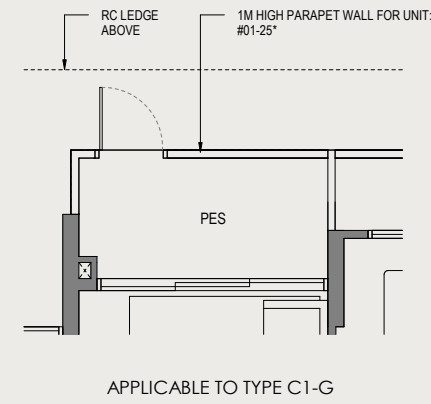
73 SQ M / 786 SQ FT  
INCLUSIVE OF 5 SQM PES

BLOCK	UNIT
811	#01-08
813	#01-12
815	#01-20
817	#01-25* #01-28

## TYPE C1

73 SQ M / 786 SQ FT  
INCLUSIVE OF 5 SQM BALCONY

BLOCK	UNIT
811	#03-05* to #08-05* #11-05* to #15-05* #18-05* to #25-05* #02-08 to #08-08 #11-08 to #15-08 #18-08 to #25-08
813	#02-12 to #08-12 #11-12 to #15-12 #18-12 to #25-12
815	#02-20 to #12-20 #15-20 to #19-20 #22-20 to #25-20
817	#02-25* to #08-25* #11-25* to #15-25* #18-25* to #25-25* #02-28 to #08-28 #11-28 to #15-28 #18-28 to #25-28

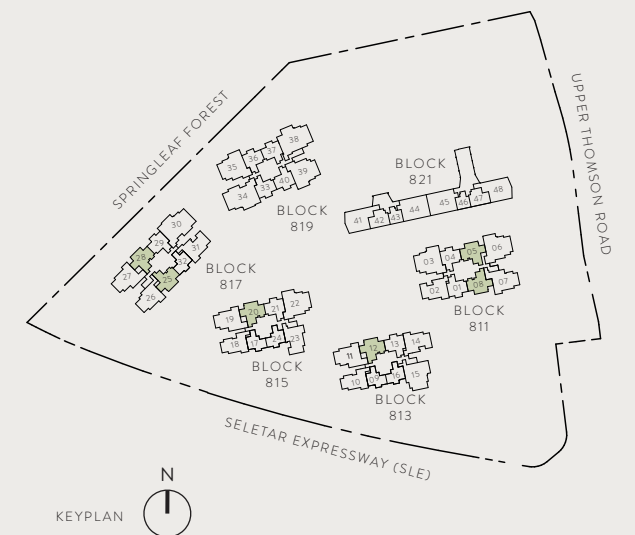
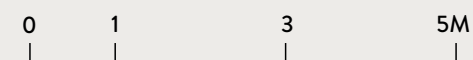


\*MIRROR IMAGE

### LEGEND

- F - Fridge
- P - Pantry
- O - Oven
- IH - Induction Hob
- WD - Washer Dryer
- DB - Distribution Board
- ST - Store

ALL PLANS ARE SUBJECT TO AMENDMENTS AS MAY BE APPROVED BY THE RELEVANT AUTHORITIES.  
FLOOR AREAS ARE APPROXIMATE MEASUREMENTS AND ARE SUBJECT TO FINAL SURVEY.  
BUILDING PLAN CX ES NO.: ES20250314-50002-CG01  
PROJECT REFERENCE NO.: A1709-A0050-2024  
DATED: 18 JULY 2025



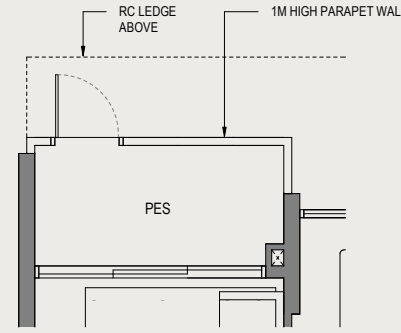
# 3 Bedroom



## TYPE C2-G

76 SQ M / 818 SQ FT  
INCLUSIVE OF 5 SQM PES

BLOCK	UNIT
813	#01-10

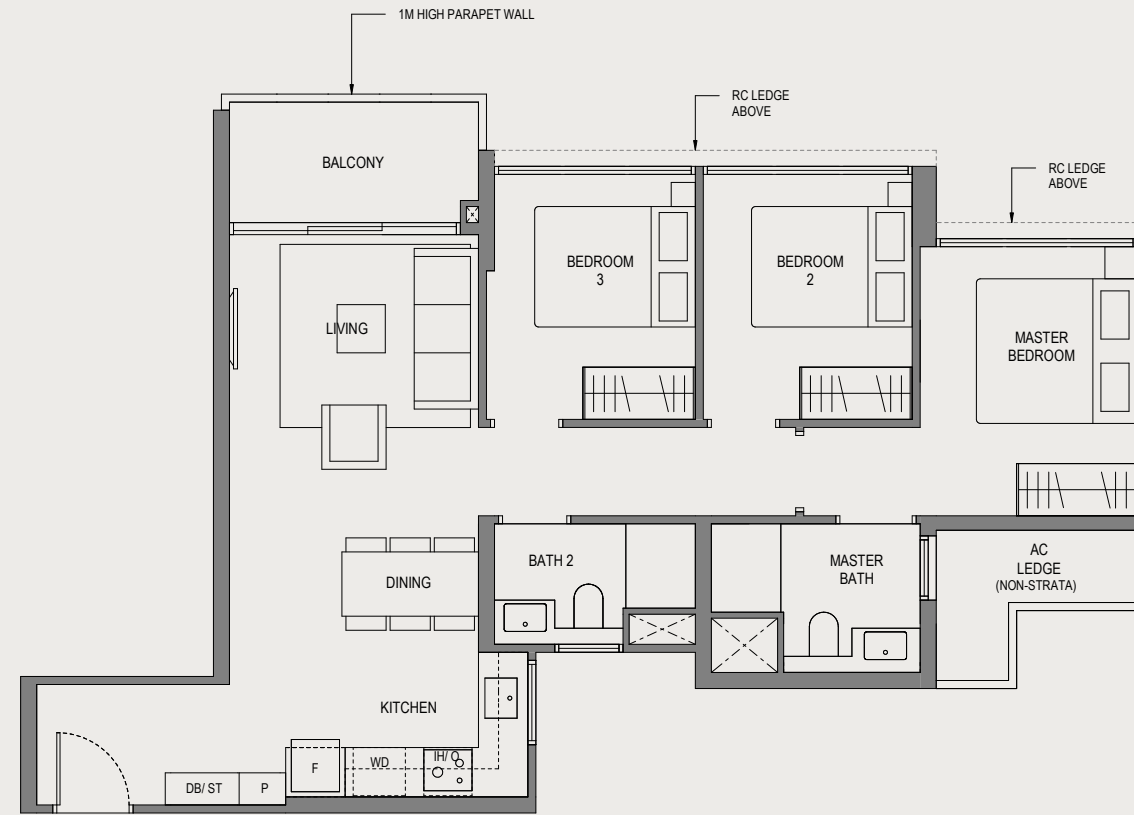


APPLICABLE TO TYPE C2-G

## TYPE C2

76 SQ M / 818 SQ FT  
INCLUSIVE OF 5 SQM BALCONY

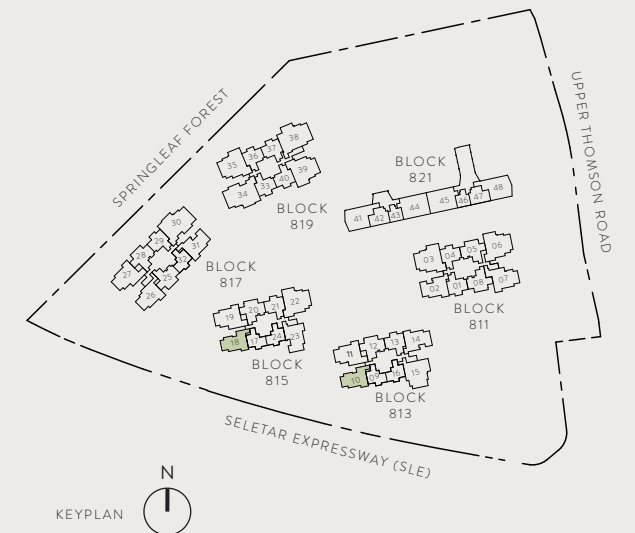
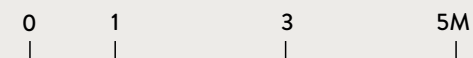
BLOCK	UNIT
813	#02-10 to #08-10 #11-10 to #15-10 #18-10 to #25-10
815	#03-18 to #12-18 #15-18 to #19-18 #22-18 to #25-18



### LEGEND

- F - Fridge
- P - Pantry
- O - Oven
- IH - Induction Hob
- WD - Washer Dryer
- DB - Distribution Board
- ST - Store

ALL PLANS ARE SUBJECT TO AMENDMENTS AS MAY BE APPROVED BY THE RELEVANT AUTHORITIES.  
FLOOR AREAS ARE APPROXIMATE MEASUREMENTS AND ARE SUBJECT TO FINAL SURVEY.  
BUILDING PLAN CX ES NO.: ES20250314-50002-CG01  
PROJECT REFERENCE NO.: A1709-A0050-2024  
DATED: 18 JULY 2025



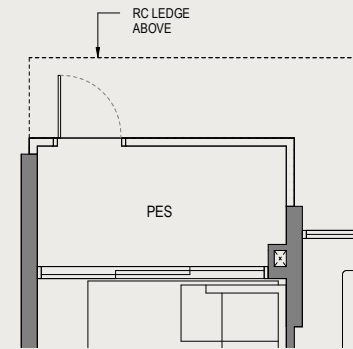
# 3 Bedroom



## TYPE C3-G

84 SQ M / 904 SQ FT  
INCLUSIVE OF 5 SQM PES

BLOCK	UNIT
811	#01-02
813	#01-14



APPLICABLE TO TYPE C3-G

## TYPE C3

84 SQ M / 904 SQ FT  
INCLUSIVE OF 5 SQM BALCONY

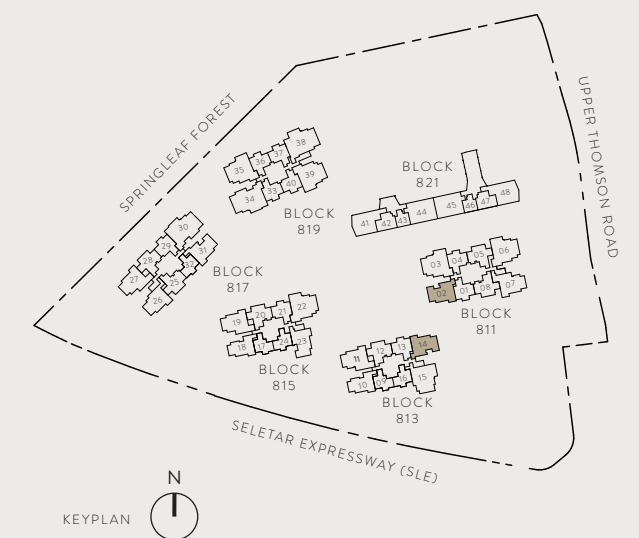
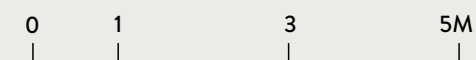
BLOCK	UNIT
811	#02-02 to #25-02
813	#02-14 to #25-14



### LEGEND

- F - Fridge
- P - Pantry
- O - Oven
- GH - Gas Hob
- WD - Washer Dryer
- DB - Distribution Board
- ST - Store

ALL PLANS ARE SUBJECT TO AMENDMENTS AS MAY BE APPROVED BY THE RELEVANT AUTHORITIES.  
FLOOR AREAS ARE APPROXIMATE MEASUREMENTS AND ARE SUBJECT TO FINAL SURVEY.  
BUILDING PLAN CX ES NO.: ES20250314-50002-CG01  
PROJECT REFERENCE NO.: A1709-A0050-2024  
DATED: 18 JULY 2025

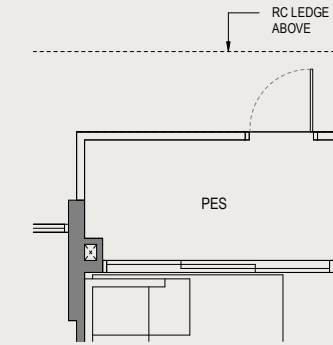


# 3 Bedroom

## TYPE C4-G

86 SQ M / 926 SQ FT  
INCLUSIVE OF 5 SQM PES

**BLOCK** 817  
**UNIT** #01-31

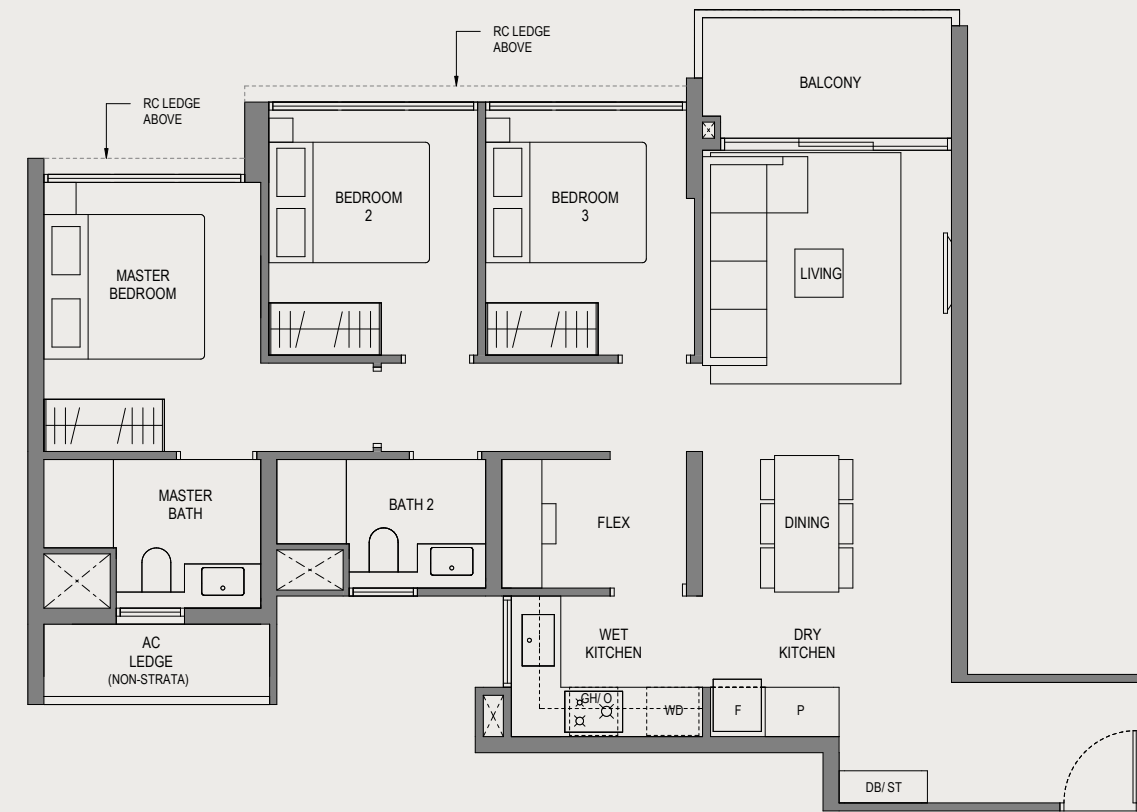


APPLICABLE TO TYPE C4-G

## TYPE C4

86 SQ M / 926 SQ FT  
INCLUSIVE OF 5 SQM BALCONY

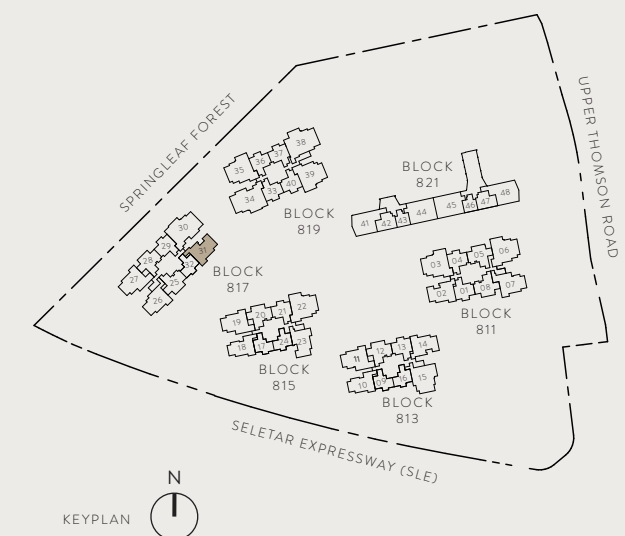
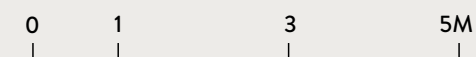
**BLOCK** 817  
**UNIT** #02-31 to #25-31



### LEGEND

- |              |                         |
|--------------|-------------------------|
| F - Fridge   | WD - Washer Dryer       |
| P - Pantry   | DB - Distribution Board |
| O - Oven     | ST - Store              |
| GH - Gas Hob |                         |

ALL PLANS ARE SUBJECT TO AMENDMENTS AS MAY BE APPROVED BY THE RELEVANT AUTHORITIES.  
FLOOR AREAS ARE APPROXIMATE MEASUREMENTS AND ARE SUBJECT TO FINAL SURVEY.  
BUILDING PLAN CX ES NO.: ES20250314-50002-CG01  
PROJECT REFERENCE NO.: A1709-A0050-2024  
DATED: 18 JULY 2025

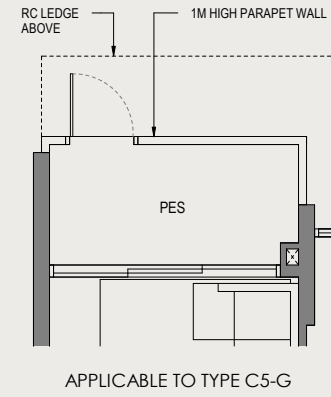


# 3 Bedroom

## TYPE C5-G

86 SQ M / 926 SQ FT  
INCLUSIVE OF 5 SQM PES

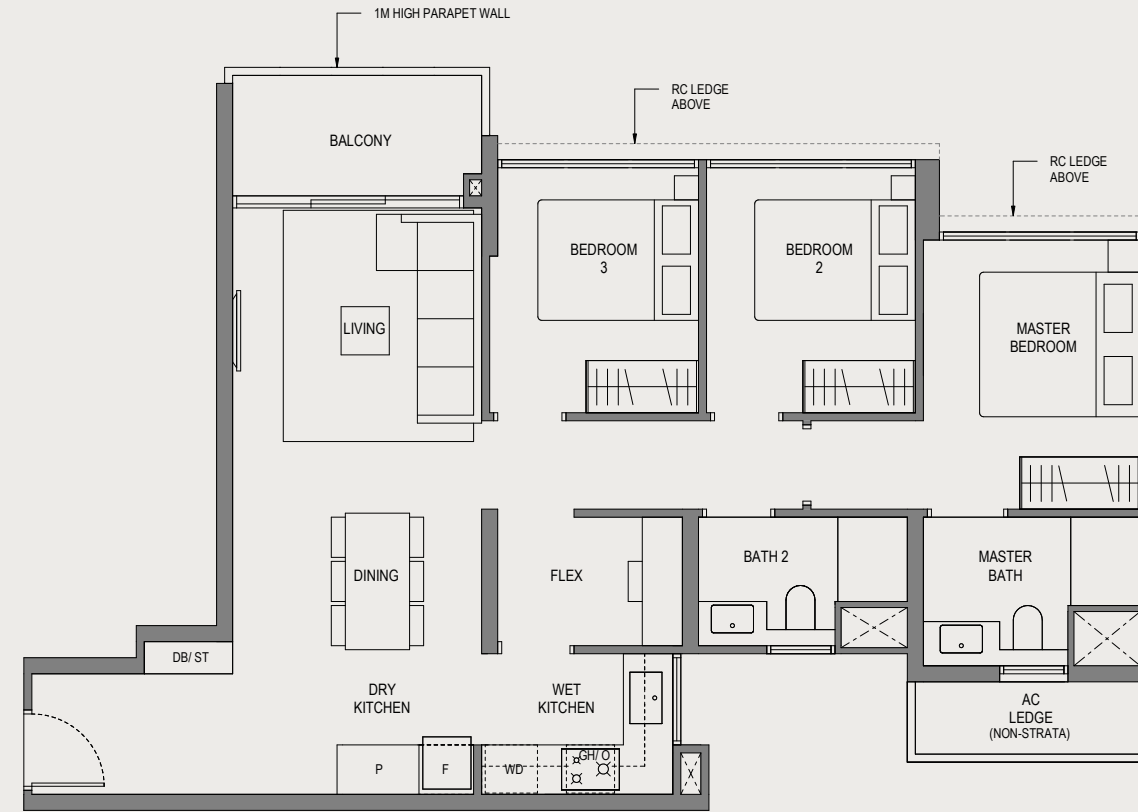
**BLOCK** 815  
**UNIT** #01-23



## TYPE C5

86 SQ M / 926 SQ FT  
INCLUSIVE OF 5 SQM BALCONY

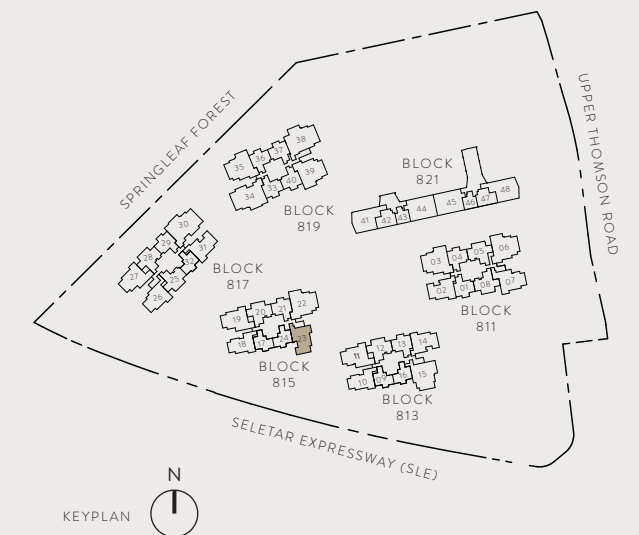
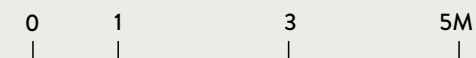
**BLOCK** 815  
**UNIT** #02-23 to #25-23



### LEGEND

- |              |                         |
|--------------|-------------------------|
| F - Fridge   | WD - Washer Dryer       |
| P - Pantry   | DB - Distribution Board |
| O - Oven     | ST - Store              |
| GH - Gas Hob |                         |

ALL PLANS ARE SUBJECT TO AMENDMENTS AS MAY BE APPROVED BY THE RELEVANT AUTHORITIES.  
FLOOR AREAS ARE APPROXIMATE MEASUREMENTS AND ARE SUBJECT TO FINAL SURVEY.  
BUILDING PLAN CX ES NO.: ES20250314-50002-CG01  
PROJECT REFERENCE NO.: A1709-A0050-2024  
DATED: 18 JULY 2025

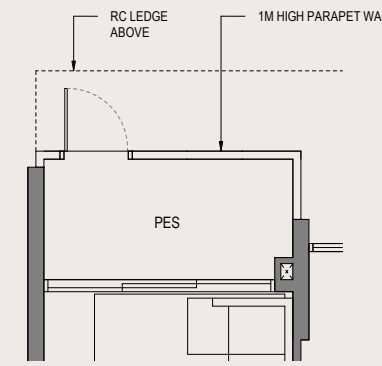


# 3 Bedroom

## TYPE C6-G

89 SQ M / 958 SQ FT  
 INCLUSIVE OF 5 SQM PES

**BLOCK**      **UNIT**  
 817            #01-26

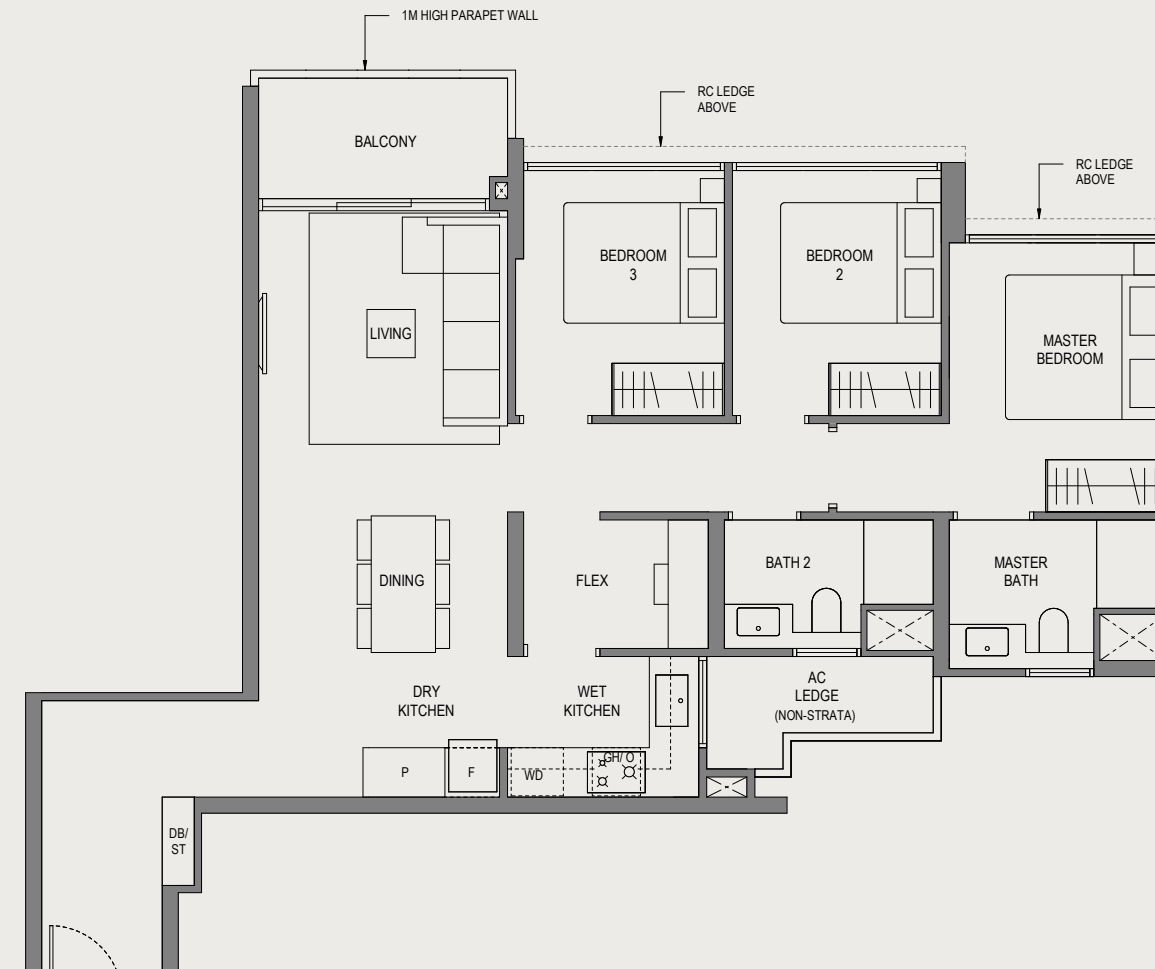


APPLICABLE TO TYPE C6-G

## TYPE C6

89 SQ M / 958 SQ FT  
 INCLUSIVE OF 5 SQM BALCONY

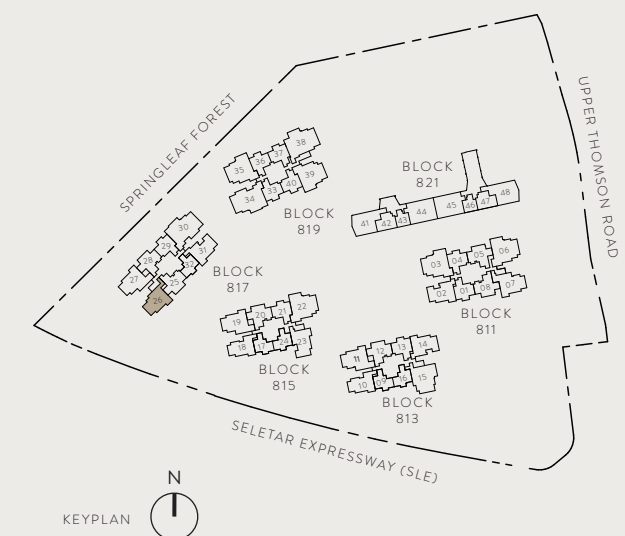
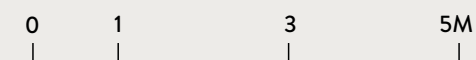
**BLOCK**      **UNIT**  
 817            #02-26 to #08-26  
                  #11-26 to #15-26  
                  #18-26 to #25-26



### LEGEND

- |              |                         |
|--------------|-------------------------|
| F - Fridge   | WD - Washer Dryer       |
| P - Pantry   | DB - Distribution Board |
| O - Oven     | ST - Store              |
| GH - Gas Hob |                         |

ALL PLANS ARE SUBJECT TO AMENDMENTS AS MAY BE APPROVED BY THE RELEVANT AUTHORITIES.  
 FLOOR AREAS ARE APPROXIMATE MEASUREMENTS AND ARE SUBJECT TO FINAL SURVEY.  
 BUILDING PLAN CX ES NO.: ES20250314-50002-CG01  
 PROJECT REFERENCE NO.: A1709-A0050-2024  
 DATED: 18 JULY 2025



# 3 Bedroom



## TYPE C7-G

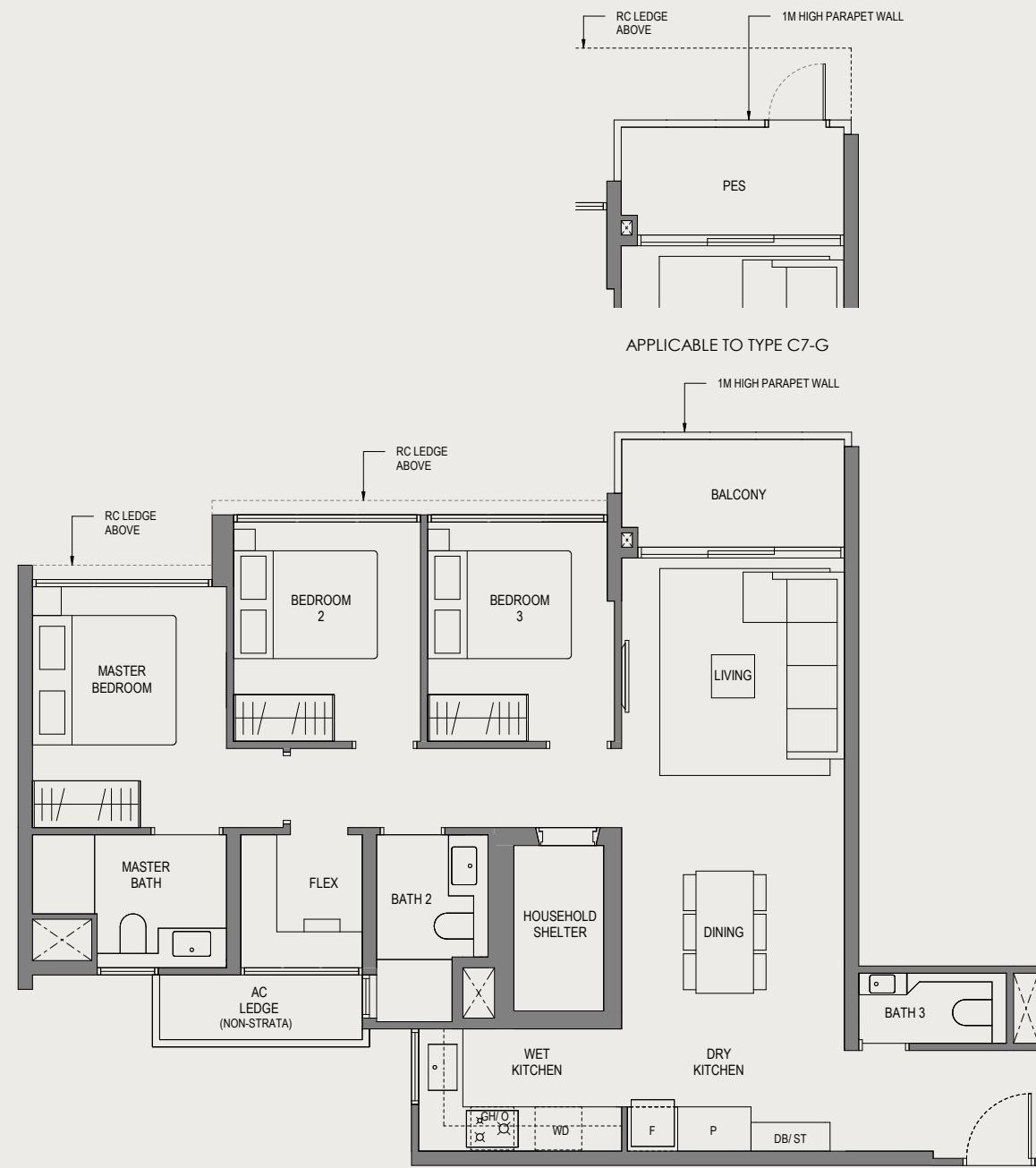
95 SQ M / 1023 SQ FT  
INCLUSIVE OF 5 SQM PES

BLOCK	UNIT
813	#01-11
817	#01-27

## TYPE C7

95 SQ M / 1023 SQ FT  
INCLUSIVE OF 5 SQM BALCONY

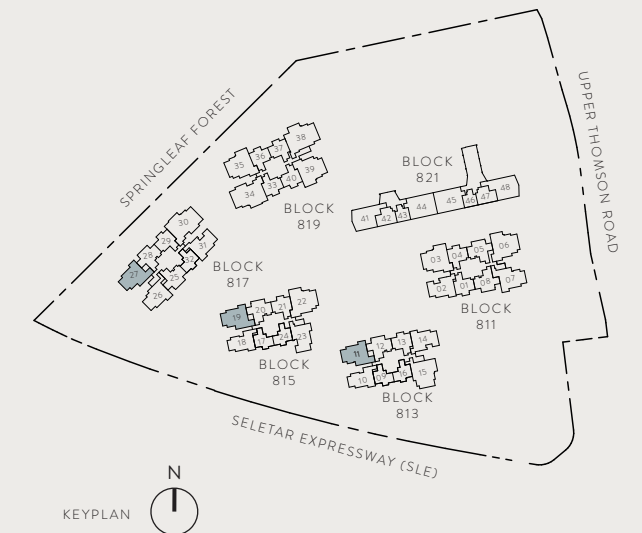
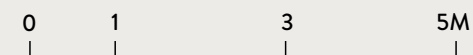
BLOCK	UNIT
813	#02-11 to #08-11 #11-11 to #15-11 #18-11 to #25-11
815	#02-19 to #12-19 #15-19 to #19-19 #22-19 to #25-19
817	#02-27 to #08-27 #11-27 to #15-27 #18-27 to #25-27



### LEGEND

- F - Fridge
- P - Pantry
- O - Oven
- GH - Gas Hob
- WD - Washer Dryer
- DB - Distribution Board
- ST - Store

ALL PLANS ARE SUBJECT TO AMENDMENTS AS MAY BE APPROVED BY THE RELEVANT AUTHORITIES.  
FLOOR AREAS ARE APPROXIMATE MEASUREMENTS AND ARE SUBJECT TO FINAL SURVEY.  
BUILDING PLAN CX ES NO.: ES20250314-50002-CG01  
PROJECT REFERENCE NO.: A1709-A0050-2024  
DATED: 18 JULY 2025



# 3 Bedroom

## TYPE C8-G

100 SQ M / 1076 SQ FT  
INCLUSIVE OF 5 SQM PES

**BLOCK** 811  
**UNIT** #01-07

## TYPE C8

100 SQ M / 1076 SQ FT  
INCLUSIVE OF 5 SQM BALCONY

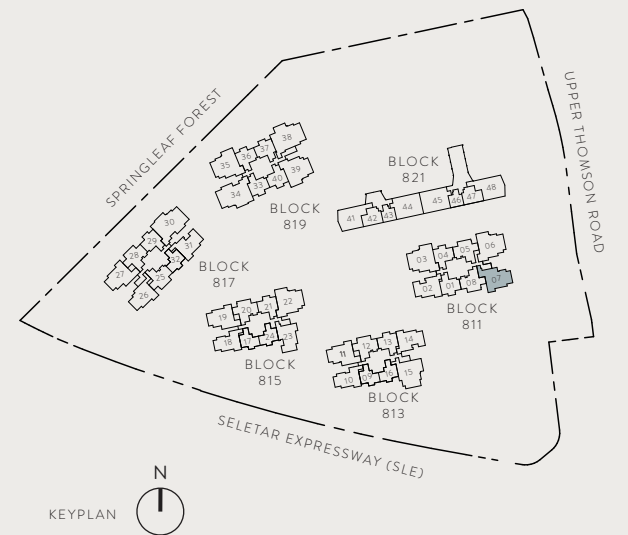
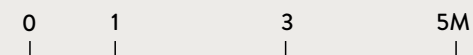
**BLOCK** 811  
**UNIT** #02-07 to #08-07  
#11-07 to #15-07  
#18-07 to #25-07



### LEGEND

- F - Fridge
- P - Pantry
- O - Oven
- GH - Gas Hob
- WD - Washer Dryer
- DB - Distribution Board
- ST - Store

ALL PLANS ARE SUBJECT TO AMENDMENTS AS MAY BE APPROVED BY THE RELEVANT AUTHORITIES.  
FLOOR AREAS ARE APPROXIMATE MEASUREMENTS AND ARE SUBJECT TO FINAL SURVEY.  
BUILDING PLAN CX ES NO.: ES20250314-50002-CG01  
PROJECT REFERENCE NO.: A1709-A0050-2024  
DATED: 18 JULY 2025



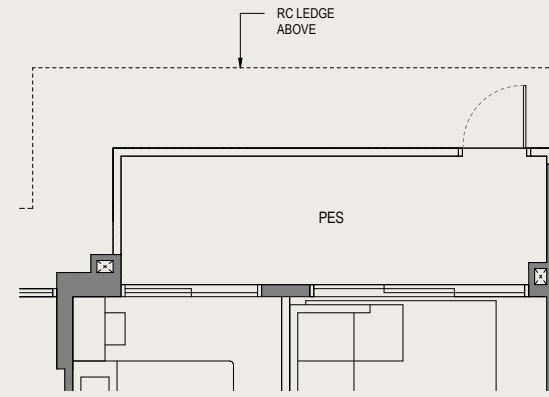
# 4 Bedroom



## TYPE D1-G

114 SQ M / 1227 SQ FT  
INCLUSIVE OF 9 SQM PES

BLOCK	UNIT
815	#01-22*
819	#01-35 #01-39

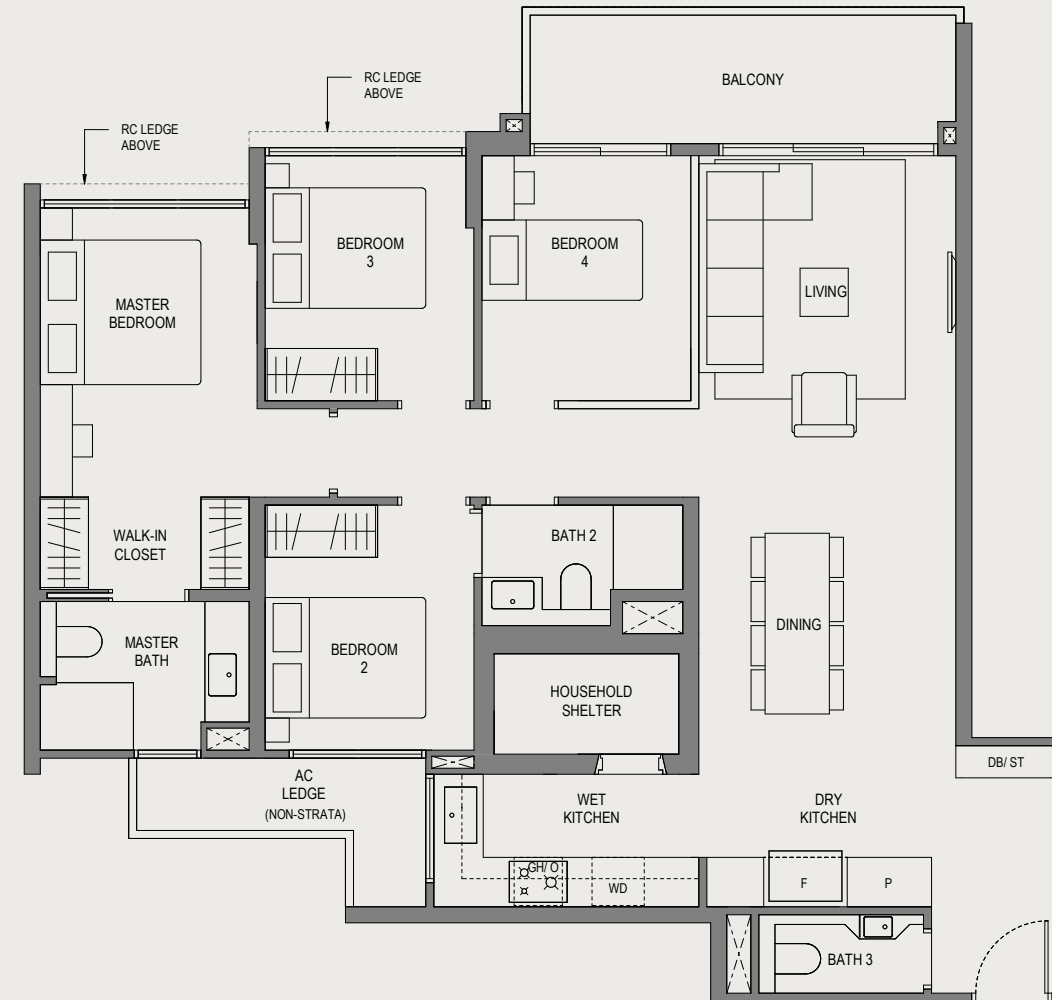


APPLICABLE TO TYPE D1-G

## TYPE D1

114 SQ M / 1227 SQ FT  
INCLUSIVE OF 9 SQM BALCONY

BLOCK	UNIT
811	#03-03 to #25-03 #03-06* to #08-06* #11-06* to #15-06* #18-06* to #25-06*
815	#02-22* to #25-22*
819	#02-35 to #25-35 #02-39 to #08-39 #11-39 to #15-39 #18-39 to #25-39

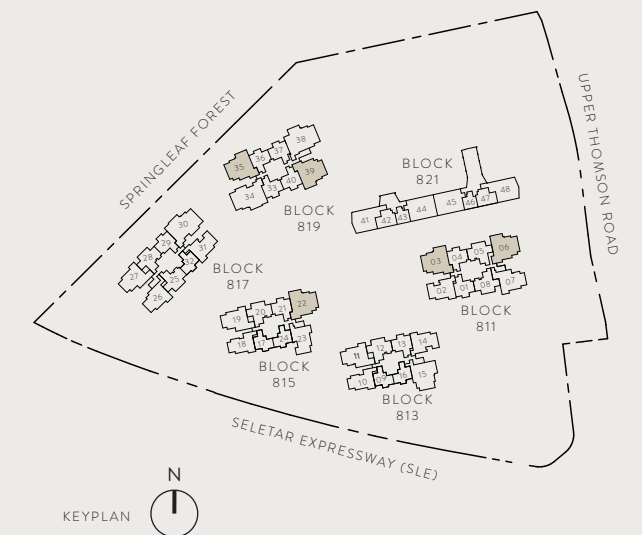
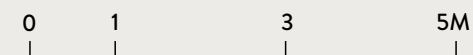


\*MIRROR IMAGE

### LEGEND

- F - Fridge
- P - Pantry
- O - Oven
- GH - Gas Hob
- WD - Washer Dryer
- DB - Distribution Board
- ST - Store

ALL PLANS ARE SUBJECT TO AMENDMENTS AS MAY BE APPROVED BY THE RELEVANT AUTHORITIES.  
FLOOR AREAS ARE APPROXIMATE MEASUREMENTS AND ARE SUBJECT TO FINAL SURVEY.  
BUILDING PLAN CX ES NO.: ES20250314-50002-CG01  
PROJECT REFERENCE NO.: A1709-A0050-2024  
DATED: 18 JULY 2025



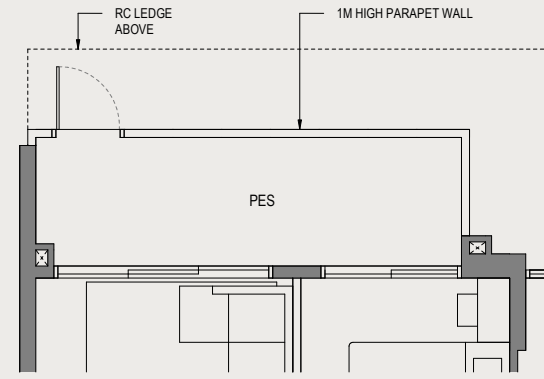
# 4 Bedroom



## TYPE D2-G

114 SQ M / 1227 SQ FT  
INCLUSIVE OF 9 SQM PES

BLOCK	UNIT
813	#01-15

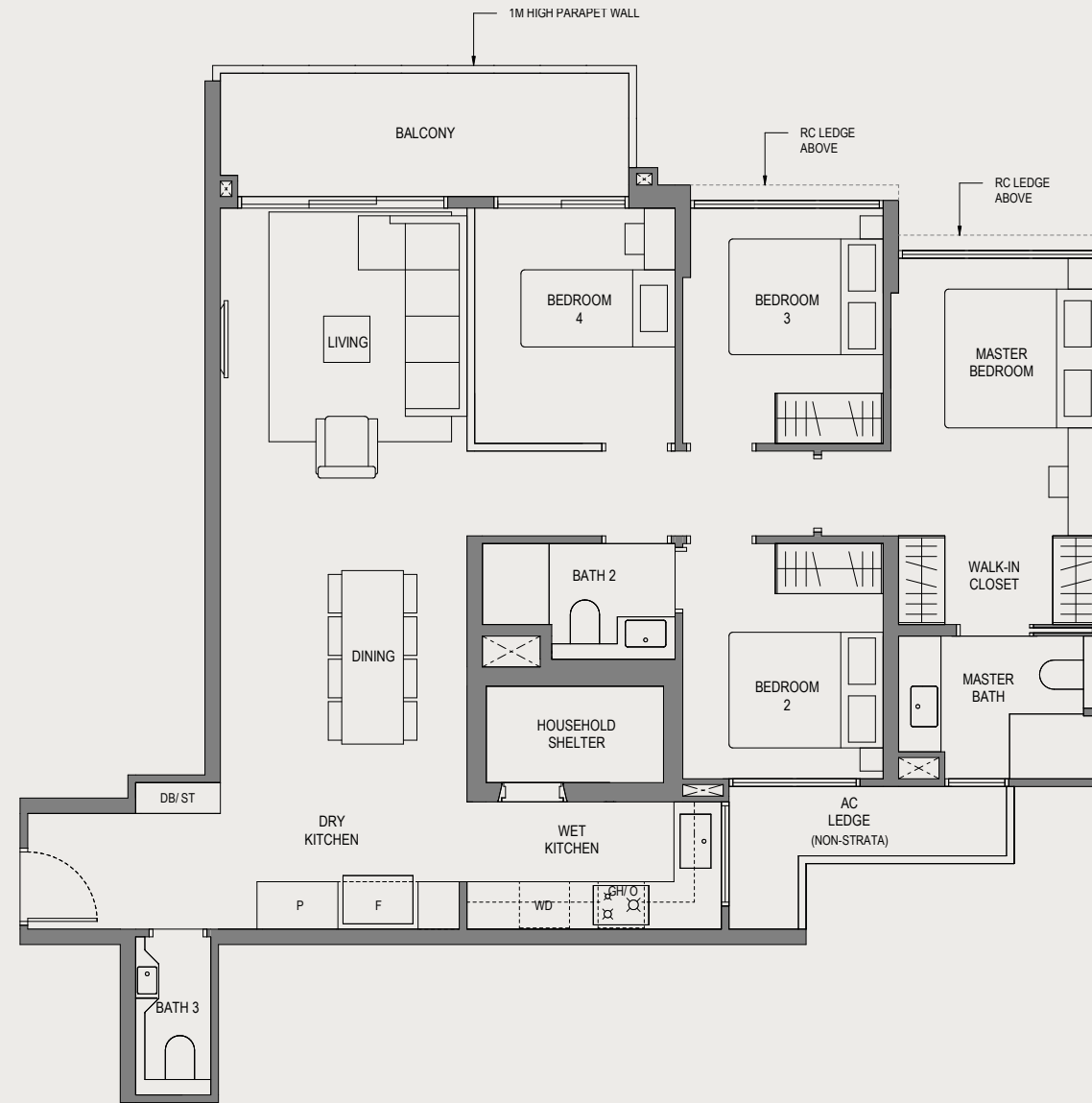


APPLICABLE TO TYPE D2-G

## TYPE D2

114 SQ M / 1227 SQ FT  
INCLUSIVE OF 9 SQM BALCONY

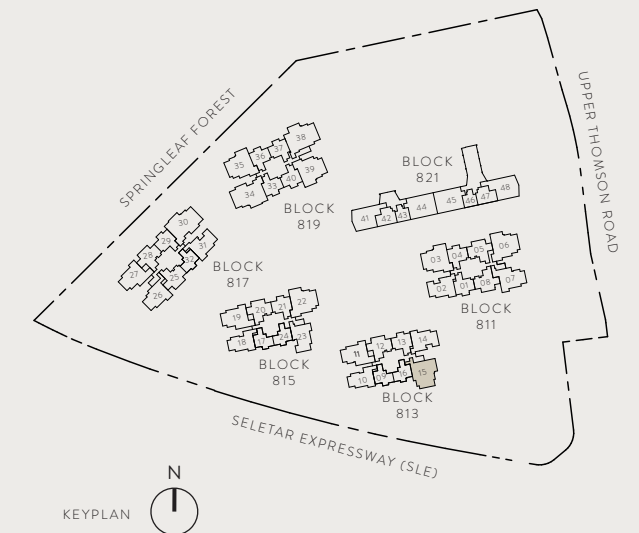
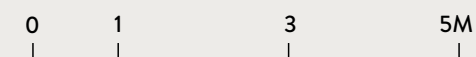
BLOCK	UNIT
813	#02-15 to #25-15



### LEGEND

- F - Fridge
- P - Pantry
- O - Oven
- GH - Gas Hob
- WD - Washer Dryer
- DB - Distribution Board
- ST - Store

ALL PLANS ARE SUBJECT TO AMENDMENTS AS MAY BE APPROVED BY THE RELEVANT AUTHORITIES.  
FLOOR AREAS ARE APPROXIMATE MEASUREMENTS AND ARE SUBJECT TO FINAL SURVEY.  
BUILDING PLAN CX ES NO.: ES20250314-50002-CG01  
PROJECT REFERENCE NO.: A1709-A0050-2024  
DATED: 18 JULY 2025



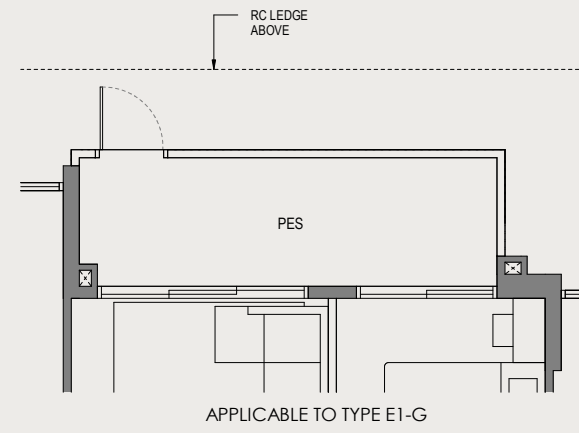
# 5 Bedroom



## TYPE E1-G

135 SQ M / 1453 SQ FT  
INCLUSIVE OF 9 SQM PES

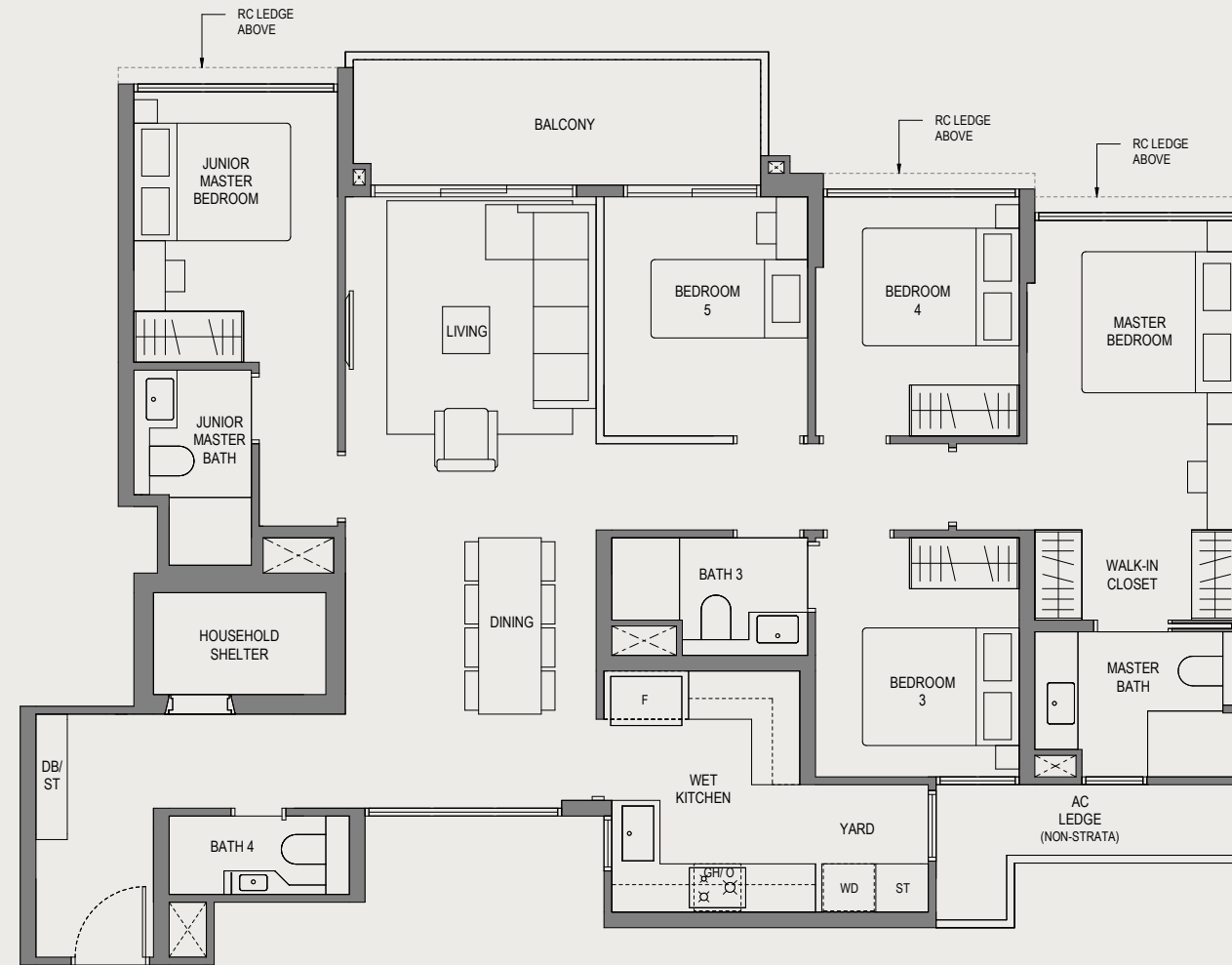
BLOCK	UNIT
817	#01-30
819	#01-34



## TYPE E1

135 SQ M / 1453 SQ FT  
INCLUSIVE OF 9 SQM BALCONY

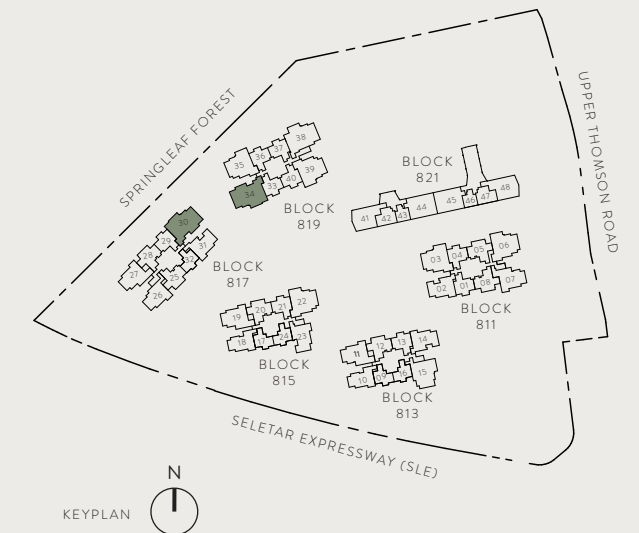
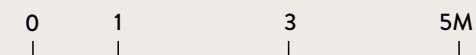
BLOCK	UNIT
817	#02-30 to #25-30
819	#02-34 to #25-34



### LEGEND

- F - Fridge
- GH - Gas Hob
- O - Oven
- WD - Washer Dryer
- DB - Distribution Board
- ST - Store

ALL PLANS ARE SUBJECT TO AMENDMENTS AS MAY BE APPROVED BY THE RELEVANT AUTHORITIES.  
FLOOR AREAS ARE APPROXIMATE MEASUREMENTS AND ARE SUBJECT TO FINAL SURVEY.  
BUILDING PLAN CX ES NO.: ES20250314-50002-CG01  
PROJECT REFERENCE NO.: A1709-A0050-2024  
DATED: 18 JULY 2025



# 5 Bedroom

## TYPE E2-G

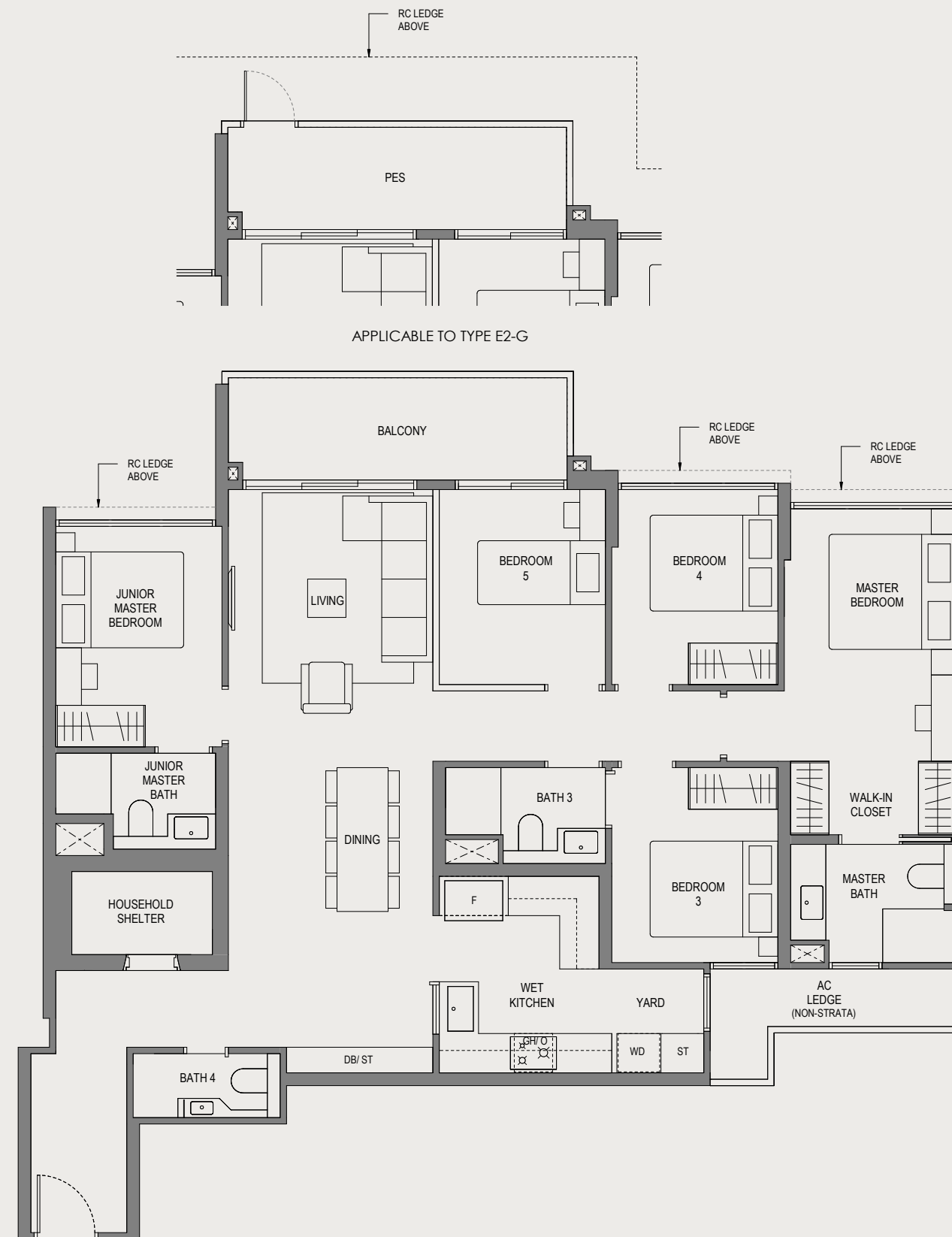
137 SQ M / 1475 SQ FT  
INCLUSIVE OF 9 SQM PES

**BLOCK** 819  
**UNIT** #01-38

## TYPE E2

137 SQ M / 1475 SQ FT  
INCLUSIVE OF 9 SQM BALCONY

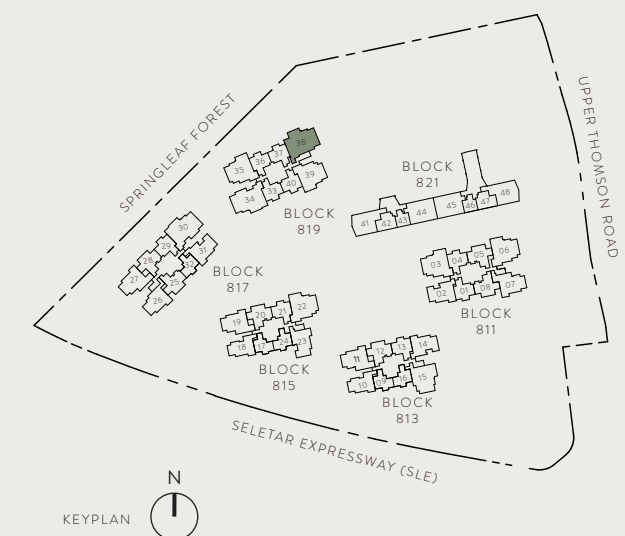
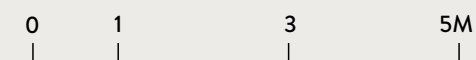
**BLOCK** 819  
**UNIT** #02-38 to #08-38  
#11-38 to #15-38  
#18-38 to #25-38



### LEGEND

- F - Fridge
- GH - Gas Hob
- O - Oven
- WD - Washer Dryer
- DB - Distribution Board
- ST - Store

ALL PLANS ARE SUBJECT TO AMENDMENTS AS MAY BE APPROVED BY THE RELEVANT AUTHORITIES.  
FLOOR AREAS ARE APPROXIMATE MEASUREMENTS AND ARE SUBJECT TO FINAL SURVEY.  
BUILDING PLAN CX ES NO.: ES20250314-50002-CG01  
PROJECT REFERENCE NO.: A1709-A0050-2024  
DATED: 18 JULY 2025



# 1 Bedroom

## TYPE AC1

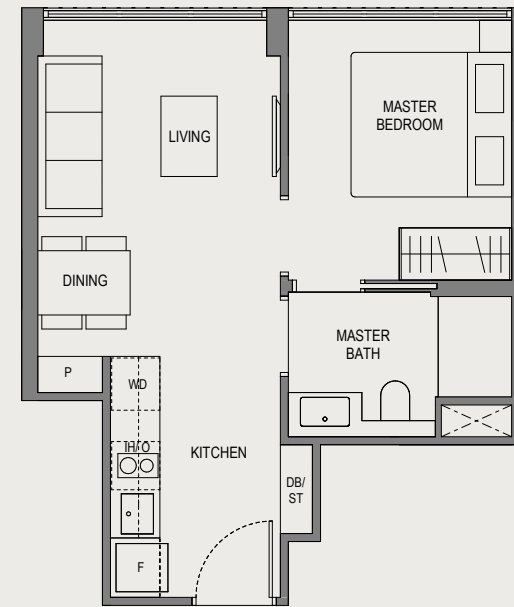
36 SQ M / 388 SQ FT

### BLOCK

821

### UNIT

#01-43\* to #04-43\*  
#01-46 to #04-46

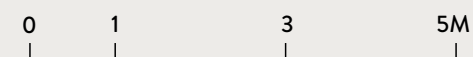


\*MIRROR IMAGE

### LEGEND

- |                    |                         |
|--------------------|-------------------------|
| F - Fridge         | WD - Washer Dryer       |
| P - Pantry         | DB - Distribution Board |
| O - Oven           | ST - Store              |
| IH - Induction Hob |                         |

ALL PLANS ARE SUBJECT TO AMENDMENTS AS MAY BE APPROVED BY THE RELEVANT AUTHORITIES.  
FLOOR AREAS ARE APPROXIMATE MEASUREMENTS AND ARE SUBJECT TO FINAL SURVEY.  
BUILDING PLAN CX ES NO.: ES20250314-50002-CG01  
PROJECT REFERENCE NO.: A1709-A0050-2024  
DATED: 18 JULY 2025



# 2 Bedroom



**TYPE BC1**

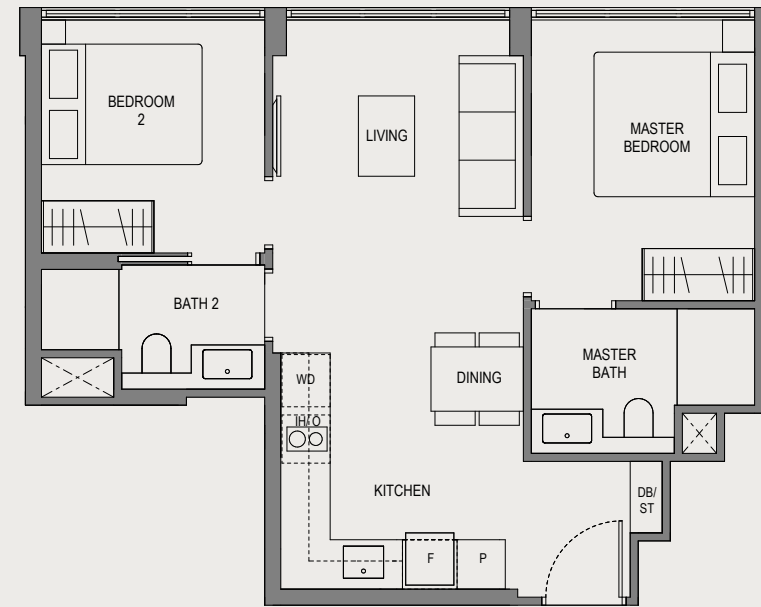
**BLOCK**

**UNIT**

55 SQ M / 592 SQ FT

821

#01-42\* to #04-42\*  
#01-47 to #04-47

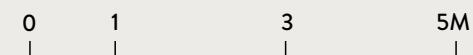


\*MIRROR IMAGE

**LEGEND**

- |                    |                         |
|--------------------|-------------------------|
| F - Fridge         | WD - Washer Dryer       |
| P - Pantry         | DB - Distribution Board |
| O - Oven           | ST - Store              |
| IH - Induction Hob |                         |

ALL PLANS ARE SUBJECT TO AMENDMENTS AS MAY BE APPROVED BY THE RELEVANT AUTHORITIES.  
FLOOR AREAS ARE APPROXIMATE MEASUREMENTS AND ARE SUBJECT TO FINAL SURVEY.  
BUILDING PLAN CX ES NO.: ES20250314-50002-CG01  
PROJECT REFERENCE NO.: A1709-A0050-2024  
DATED: 18 JULY 2025



# 3 Bedroom



**TYPE CC1**

**BLOCK**

**UNIT**

104 SQ M / 1119 SQ FT

821

#01-41\* to #04-41\*  
#01-48 to #04-48

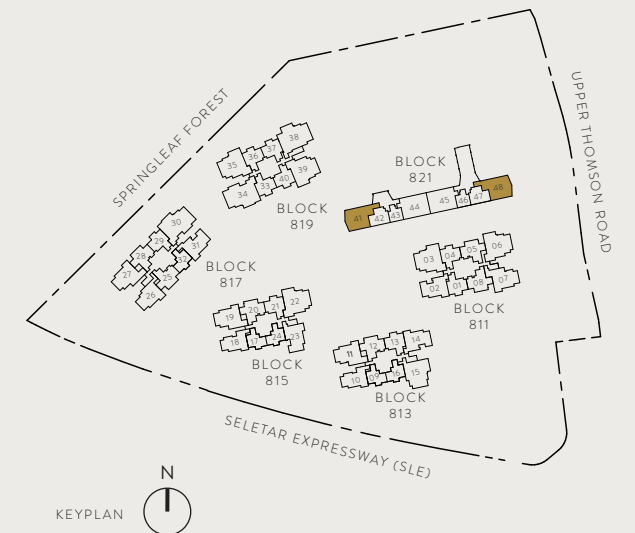
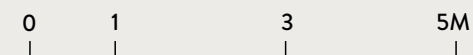


\*MIRROR IMAGE

**LEGEND**

- |              |                         |
|--------------|-------------------------|
| F - Fridge   | WD - Washer Dryer       |
| GH - Gas Hob | DB - Distribution Board |
| O - Oven     | ST - Store              |

ALL PLANS ARE SUBJECTED TO AMENDMENTS AS MAY BE APPROVED BY THE RELEVANT AUTHORITIES.  
FLOOR AREAS ARE APPROXIMATE MEASUREMENTS AND ARE SUBJECTED TO FINAL SURVEY.  
BUILDING PLAN CX ES NO.: ES20250314-50002-CG01  
PROJECT REFERENCE NO.: A1709-A0050-2024  
DATED: 18 JULY 2025

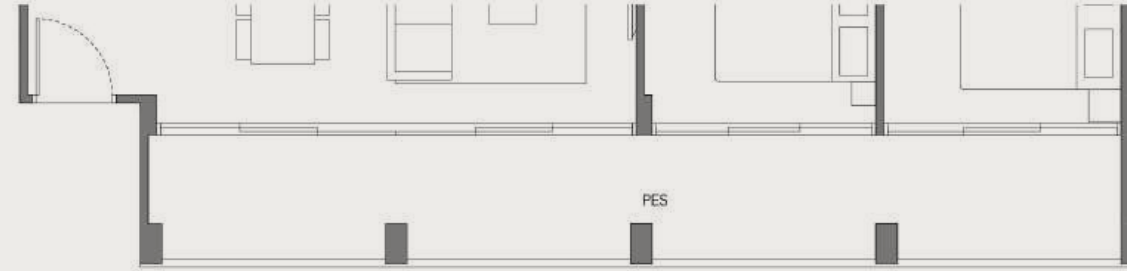


# 3 Bedroom

## TYPE CC2-G

117 SQ M / 1259 SQ FT  
INCLUSIVE OF 20 SQM PES

BLOCK	UNIT
821	#01-44* #01-45



## TYPE CC2

117 SQ M / 1259 SQ FT  
INCLUSIVE OF 20 SQM BALCONY

BLOCK	UNIT
821	#02-44* to #04-44* #02-45 to #04-45



\*MIRROR IMAGE

### LEGEND

- |              |                         |
|--------------|-------------------------|
| F - Fridge   | WD - Washer Dryer       |
| GH - Gas Hob | DB - Distribution Board |
| O - Oven     | ST - Store              |

ALL PLANS ARE SUBJECT TO AMENDMENTS AS MAY BE APPROVED BY THE RELEVANT AUTHORITIES.  
FLOOR AREAS ARE APPROXIMATE MEASUREMENTS AND ARE SUBJECT TO FINAL SURVEY.  
BUILDING PLAN CX ES NO.: ES20250314-50002-CG01  
PROJECT REFERENCE NO.: A1709-A0050-2024  
DATED: 18 JULY 2025

